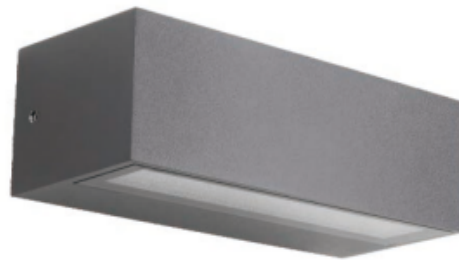


H I S E N S

HS-EX501

Wall Light



SPECIFICATIONS

Wattage: 6W	Input Voltage: 240V
CCT: 3000K	Length/Dia (mm): 142mm
Height (mm): 47mm	IP Rating: IP65
Body Material: Aluminium+Glass	CRI: 80+
Mounting Type: Surface Mount	LED Type: SMD LED Chip
Body Color: Dark Grey	Brand: Hisens
Warranty: 3 Years	

